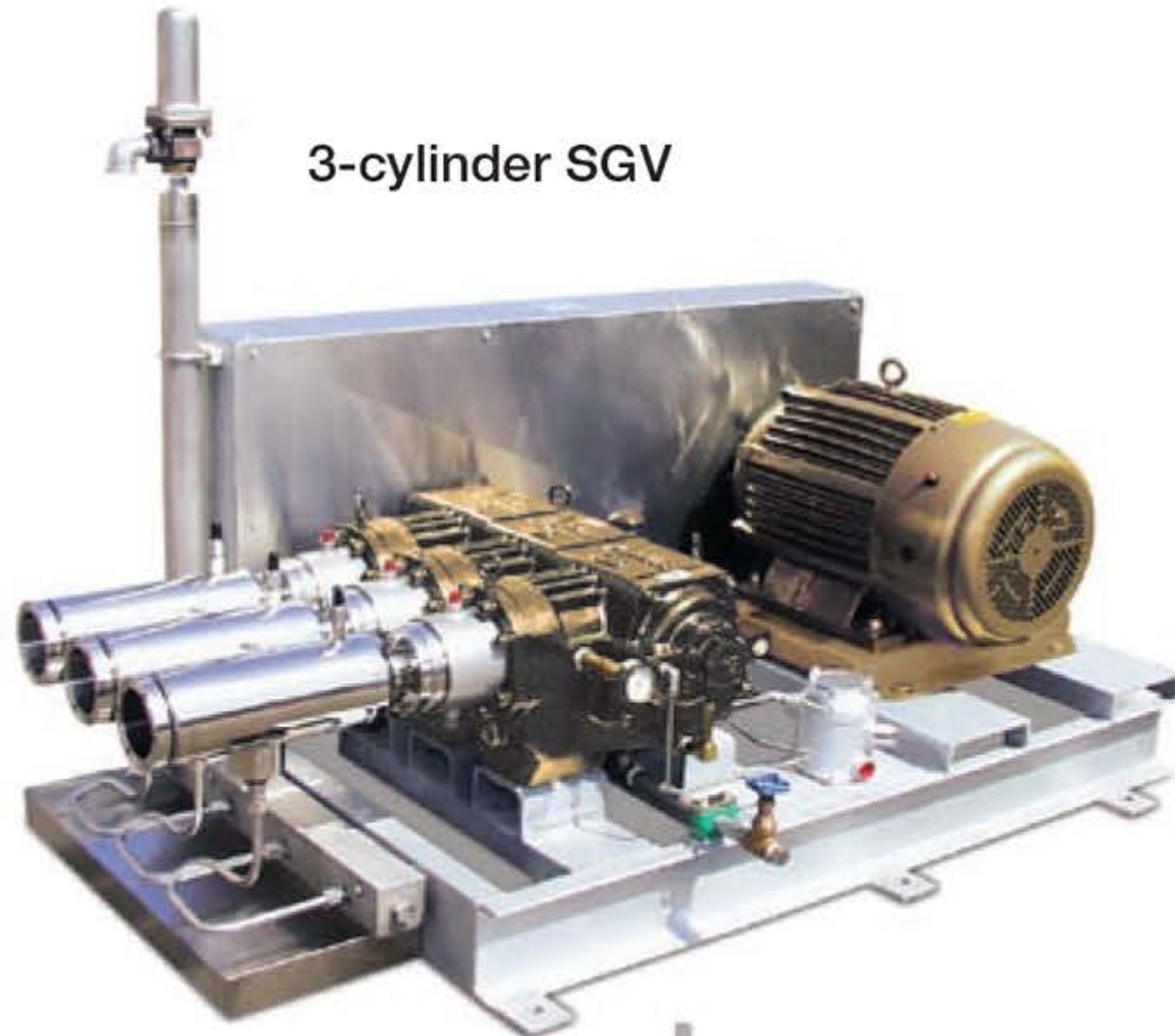
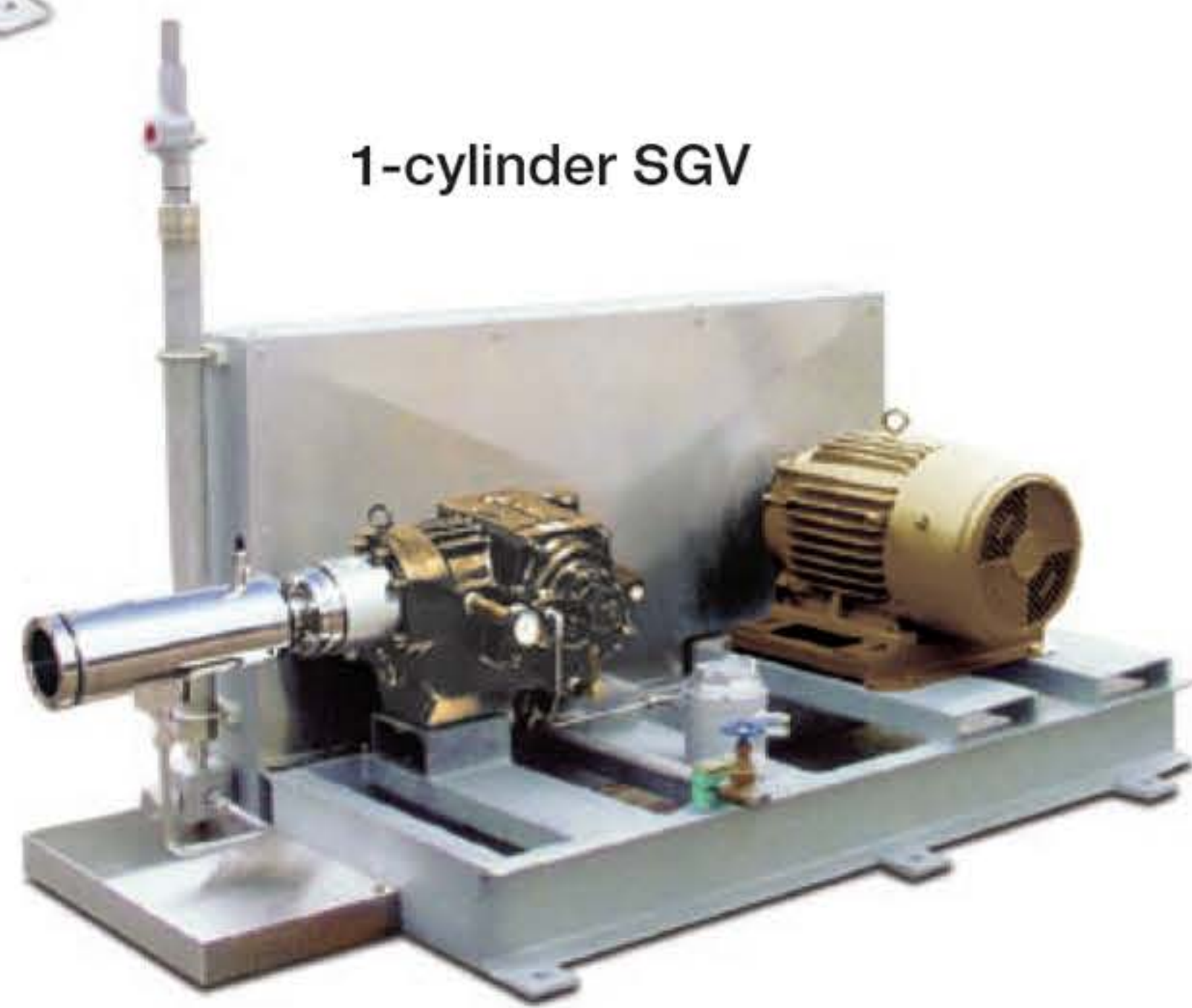


SGV SERIES

STORAGE FILLING PUMP



3-cylinder SGV



1-cylinder SGV



SPECIFICATIONS				
bore x stroke	in	1.25 x 1.38	1.625 x 1.38	1.97 x 1.38
	(mm)	(32 x 35)	(41 x 35)	(50 x 35)
Flow Rate	gpm	0.94 – 15.3	1.6 – 25.9	2.35 – 38.1
	lpm	3.56 – 57.9	6.1 – 98.0	8.9 – 144.2
	LH ₂ gpm	0.90 – 10.8	1.52 – 18.3	2.25 – 26.9
Pump Design Rating	hp	15 – 200	15 – 200	15 – 200
	kw	11 – 150	11 – 150	11 – 150
Maximum Discharge Pressure	psi	10,000	6,000	6,000
	bar	690	420	420
NPSPR	psi	10	5	5
	bar	0.70	0.35	0.35

60 HZ performance

FEATURES & BENEFITS

- Modular, compact displacement pumps available in 1, 2, or 3 cylinder configurations provide a wide range of flows
- Vacuum jacketed cold end for minimal cooldown losses and economical operation, ideal for liquid hydrogen
- Pressurized oil lubricated drive with integral oil pump and reservoir, allows higher bearing loads/prevent oil leakage
- Belt driven by electric drive motors allows for extended pump duty
- Improved cold end assembly design extends seal life

APPLICATIONS

- Specially designed for storage filling
- Special medium to heavy duty applications
- LNG, LN₂, LH₂ process

LIQUIDS PUMPED

- N₂, O₂, Ar, H₂
- Methane (LNG)

TYPICAL SCOPE OF SUPPLY

- Vacuum jacketed cold end with pressure oil lubricated drive end
- Positive locking coupling
- Standard suction adapter with Monel strainer
- Distance piece with purge ports
- Hot dipped galvanized steel skid
- TEFC motor
- High pressure relief valve with discharge line and surge chamber
- Drip pan kit for LH₂ only
- Suction/vapor return manifold for multiple cylinders

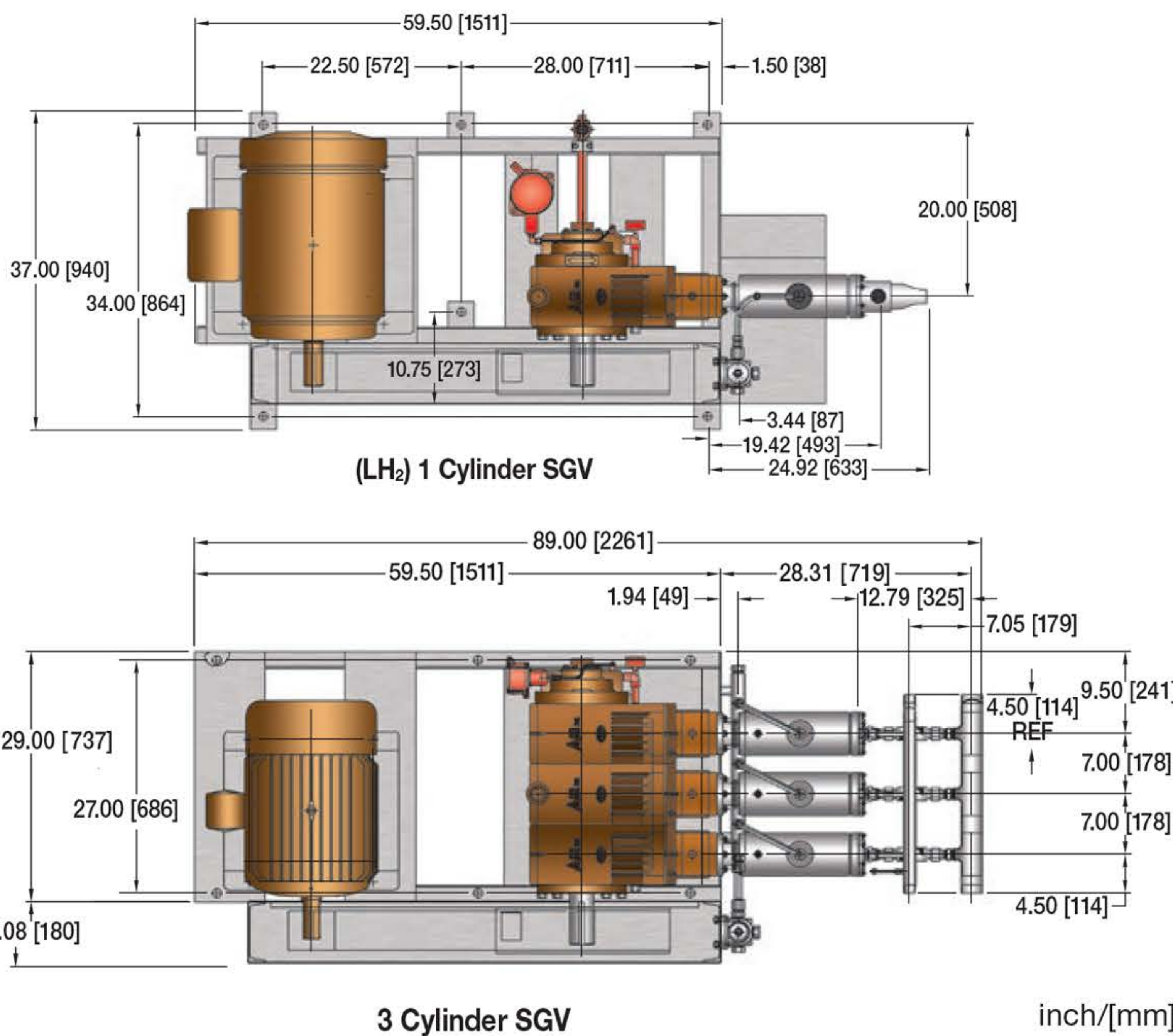
Para más información comuníquese al
305.888.5353
o al correo electrónico
info@intltec.com



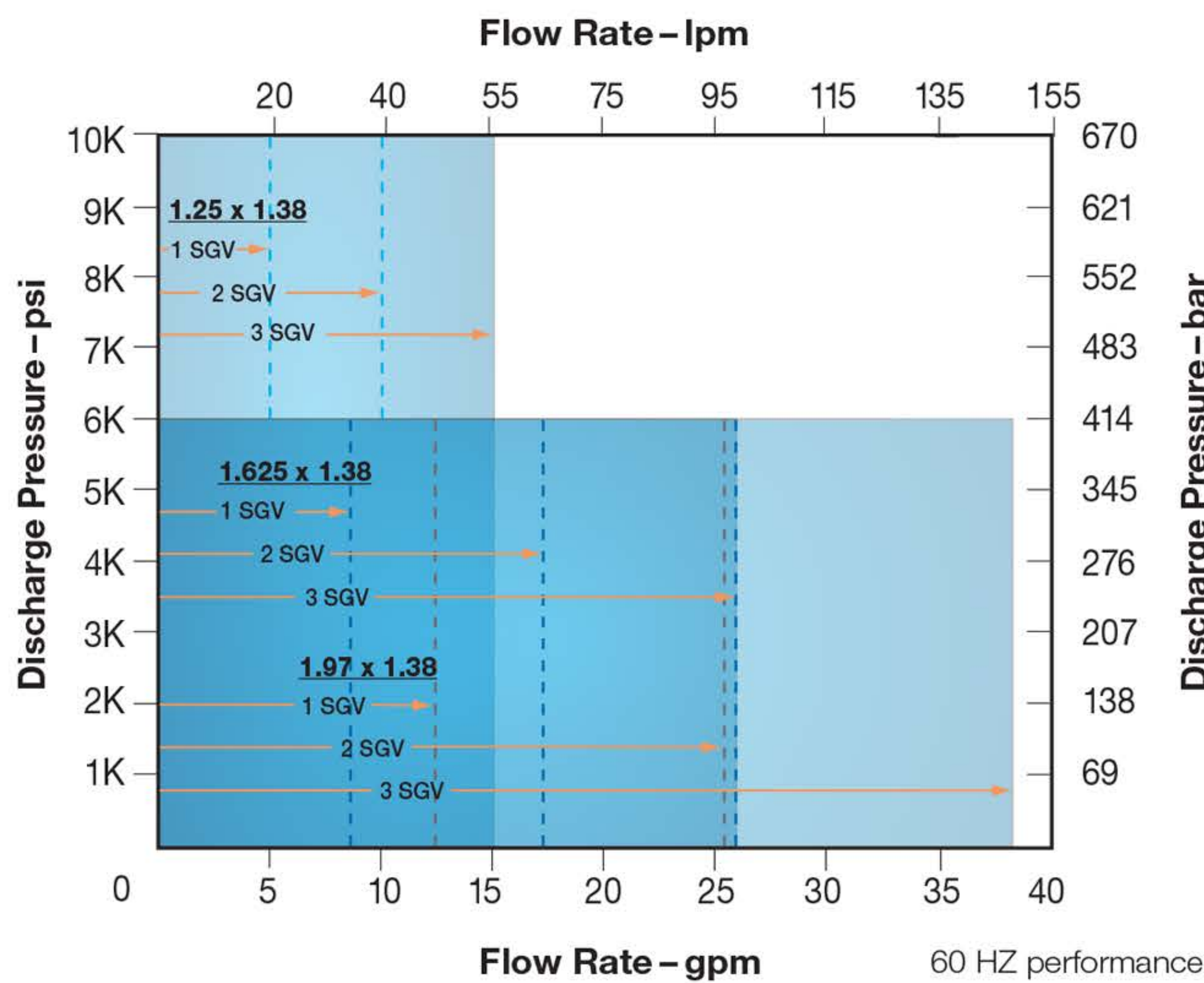
**INTERNATIONAL
TECHNISYSTEMS INC.**

SGV SERIES

OVERALL DIMENSIONS: TYPICAL 1 AND 3 CYLINDER – SKID MOUNTED



PUMP PERFORMANCE MAP



OPTIONAL ACCESSORIES

- Vacuum jacketed suction adapter (standard for LH₂)
- Piping manifolds
- Control panel, manual or auto
- Loss of prime detector (cavitation protection)
- Cooldown lock-up control

MANUFACTURING



2321 S. Pullman Street
Santa Ana, CA 92705 USA
Tel 800.525.4216 (USA only)
Tel +1.949.261.7533
Fax +1.949.261.6285
acd@acdllc.com • acdllc.com



Gutenbergstrasse 1
CH-4142 Muenchenstein Switzerland
Tel: +41.61.413.0230
Fax: +41.61.413.0233
sales@acdcrysto.com • acdcrysto.com

GLOBAL SERVICE

NORTH AMERICA

Atlanta

Atlanta, Georgia, USA
+1 404.696.8113 • Fax +1 404.696.8116
sales@cryoatlanta.com • cryoindservice.com

California

Santa Ana, California, USA
+1 949.724.8636 • Fax +1 714.641.1921
sales@cryocal.com • cryoindservice.com

Houston

Houston, Texas, USA
+1 281.590.4800 • Fax +1 281.590.4801
sales@cihouston.com • cryoindservice.com

Pittsburgh

Imperial, Pennsylvania, USA
+1 724.695.1910 • Fax +1 724.695.1926
pittcryo@pittcryogenic.com • cryoindservice.com

Red Deer

Red Deer, Alberta, Canada
+1.403.352.4436 • Fax +1.403.352.4439
sales@cryocanada.com • cryoindservice.com

Toronto

Toronto, Ontario, Canada
+1 416.502.1950 • Fax +1 416.502.1952
info@cryocanada.com • cryoindservice.com

INTERNATIONAL

Australia

Dandenong, Victoria, Australia
+61.3.9791.7888 • Fax +61.3.9769.2788
sales.au@cryoquip.com • cryoquip.com

Brasil

São Paulo - SP, Brasil
+55 11 2341.7474
sales.br@cryoind.com • cryoindservice.com

China

Hangzhou, China
+86.571.8869.0788 • Fax +86.571.8869.0715
hci@mail.hz.zj.cn • cryoindservice.com

Europe

D-79415 Bad Bellingen Germany
+49.7635.8105.0 • Fax: +49.7635.8965
info@acdcrysto.com • acdcrysto.com

India

Vadodara, Gujarat, India
+91.265.283 0113 • Fax +91.265.283 0112
npatel@acdllc.com • acdcom.com

Korea

Yongin-si, Gyeonggi-do, Korea
+82.31.286.6114 • Fax +82.31.286.6118
info@ci-korea.co.kr • cryoindservice.com

Malaysia

Shah Alam, Selangor D.Ehsan, Malaysia
+603.5740.8770 • Fax +603.5740.8775
sales@cimalaysia.com • cryoindservice.com

Bulletin No. ACD SGV-R3.09

Para más información comuníquese al
305.888.5353
o al correo electrónico
info@intltec.com



**INTERNATIONAL
TECHNISYSTEMS INC.**